



What's new in 3.0.1 release?

In addition to existing features, the Image Archive proposes the following functionalities in its 3.0.1 version:

[New Connectors](#)

[Custom srs management](#)

[Support for time-series](#)

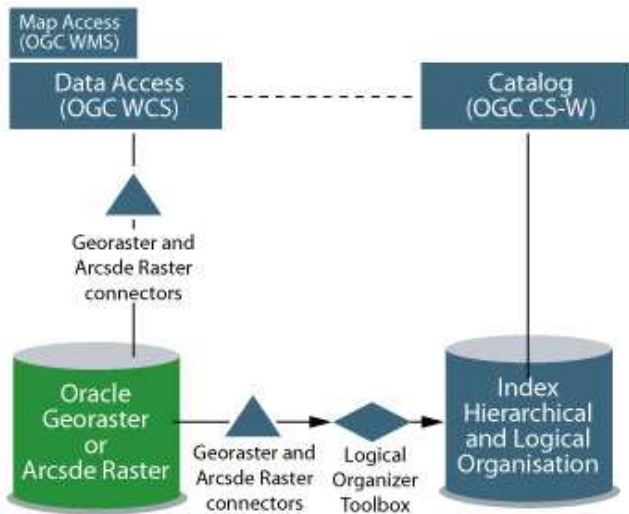
[New Portraying abilities](#)

[New APIs](#)

[Upgraded management tool](#)

[Upgraded web client](#)



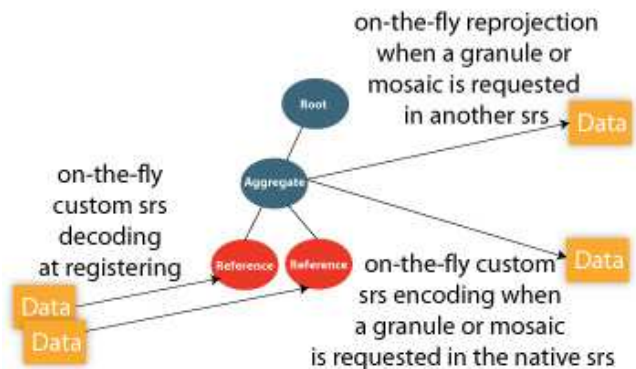


New Data Connectors

- Oracle® Georaster connector: Browse and select Oracle® database raster tables, to make them available through the Image Archive Web interfaces. Benefit from the Oracle® Georaster data management abilities (analysis, pyramids)
- ArcSDE® Raster connector: Browse and select ArcSDE® raster tables, to make them available through the Image Archive Web interfaces.

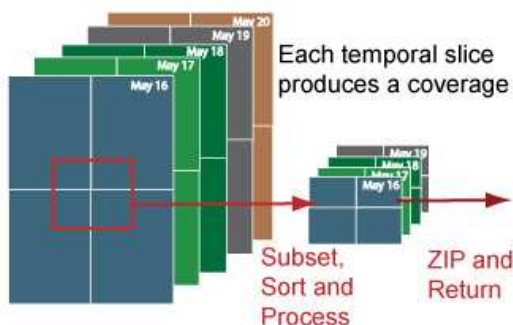
Custom SRS management

- Custom spatial reference systems decoding and encoding: Custom datums and projections defined in the source binary data, for example in the Geotiff tags, can now be decoded on-the-fly. These custom srs are dynamically supported through the whole processing chain.
- Support for OGC WKT encoding: The OGC Well-Known-Text (WKT) encoding can be used to define custom spatial reference systems.



Support for time-series

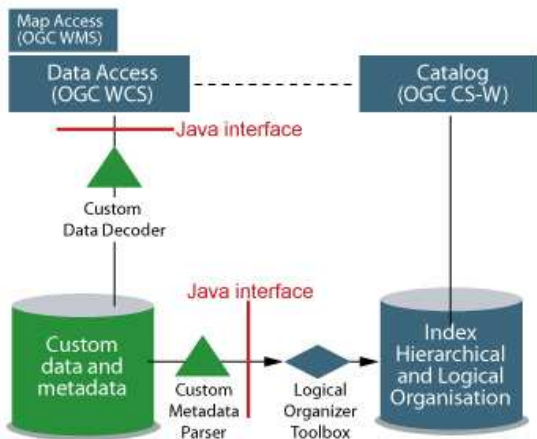
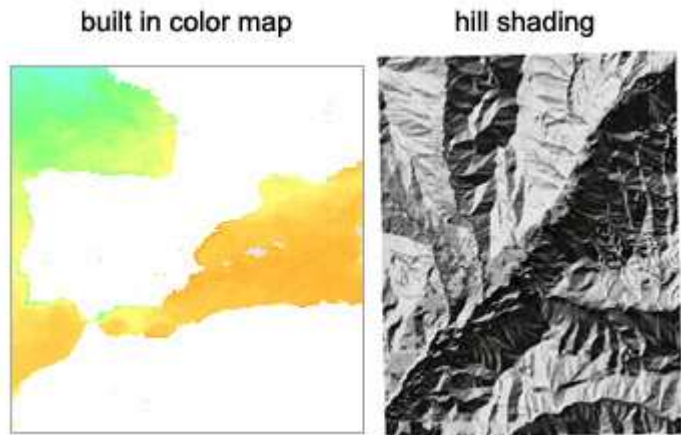
- The WCS interface can now return time-series: The Coverage Framework can subset and mosaic the data, in order to build the multiple temporal slices that compose the time-series. The resulting coverages are returned in a single zip file.



- Visualise your time-series in the ISManager: The Index Management tool allows to visualise the time-series animation.

New Portrayal abilities

- Built-in colormap decoding, encoding and usage for portraying: Colormaps defined in the source binary data are now decoded and supported, enabling data interpretation per granule.
- Hill shading algorithm: Elevation data can be portrayed using a hill shading algorithm

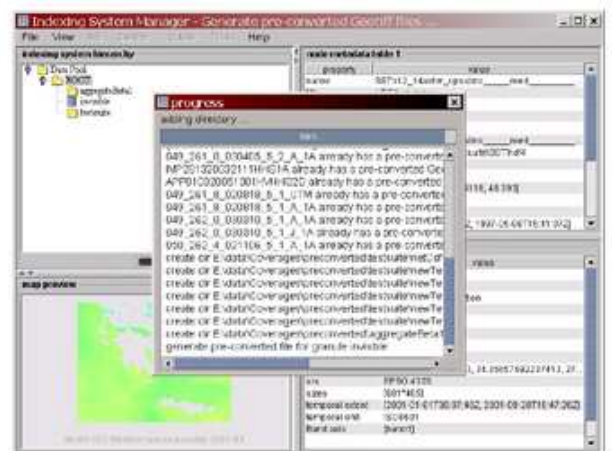


Extended Java APIs

- Build and plug custom decoder: New Java interfaces and APIs are available to implement and plug a custom or proprietary coverage decoder.
- Build and plug custom metadata parser: New Java interfaces and APIs are available to implement and plug a custom or proprietary metadata parser.

Upgraded management tool

- New tool to automatically parse the catalog hierarchy and generate reduced resolution sets. This allows to automatically speed the visualization of high-resolution data.
- Browsers for Oracle® GeoRaster and ArcSDE® Raster data
- Time serie configuration and visualisation
- Improved ergonomy





Upgraded web client

- SRS switching: Switch the spatial reference system to visualize the data, and the surrounding context, in any projection.
- Annotations: Create annotated geometries that will be stored in the optional annotation service (WFS-T), and managed in the viewer interface.
- Improved ergonomy

For more details, contact :

Luc Donéa

RedSpider Image Archive Product Manager

IONIC Software - Belgium

luc.donea@ionicsoft.com

<http://www.ionicsoft.com>